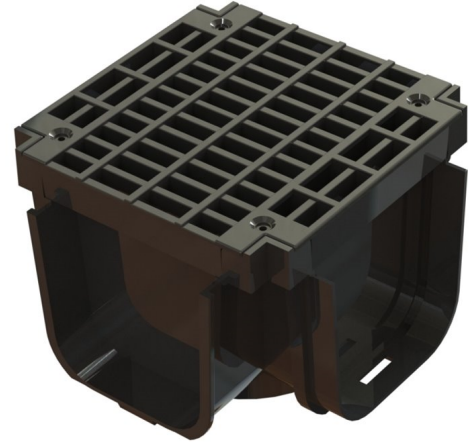




CD-406-MESH - Linear Drainage

KEY FEATURES

- CE marked and fully certified to BS EN 1433:2002
- Lightweight non-rusting design, manufactured from recycled polypropylene
- Designed to be used with CD 422 channel for change of direction / 90 degree corner applications
- Mesh 'snap-lock' mesh grating; secure yet easy to remove for cleaning and maintenance
- 'Spring-Lock' male/female connection to channel
- Provision for locking screws in grating (purchased separately)
- Suitable for garage thresholds, patios, gardens and play areas
- Where water-tight Clark Drain channel is mandatory, a suitable mastic sealant such as Sikaflex (219i, 11FC) or Geocel (945, Marine) should be used when fitting channels together (and accessories)



CD-406-MESH - Specifications

Product Weight (Kg)	0.3
Overall Dimensions	175 x 165 x 130
Material	Polypropylene Grade AP9
Slot Size	8.15 x 17/23
Load Rating	A15
Max flow through (litres per second)	4.3
Waterway Area (cm ²)	120



CD406MESH/V0.1/23-11-2023

Due to our continuous product improvement program features and sizes may be subject to change without notice.

CLARK DRAIN, STATION ROAD, YAXLEY, PETERBOROUGH, PE7 3EQ, TEL. +44 (0) 1733 765317